

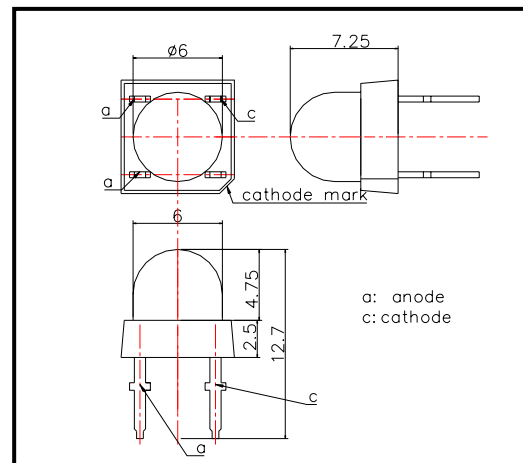
FL630W-21 Super Beam type LED

FL630W-21 is an InGaAlP LED mounted on a lead frame and molded with super beam lens. On forward bias, it emits a band of visible light which peaks 635nm.

◆ Specifications

- | | |
|---------------------|---------------------|
| 1) Product Name | Epoxy mold type LED |
| 2) Type No. | FL630W-21 |
| 3) Chip | |
| (1) Chip Material | InGaAlP |
| (2) Peak Wavelength | 635nm typ. |
| 4) Package | |
| (1) Type | Super Beam type LED |
| (2) Resin Material | Epoxy Resin |
| (3) Lead Frame | Soldered |

◆ Outer dimension (Unit: mm)



◆ Absolute Maximum Ratings

Item	Symbol	Maximum Rated Value	Unit	Ambient Temperature
Power Dissipation	P _D	140	mW	T _a =25°C
Forward Current	I _F	50	mA	T _a =25°C
Reverse Voltage	V _R	5	V	T _a =25°C
Operating Temperature	T _{OPR}	-30 ~ +85	°C	
Storage Temperature	T _{STG}	-30 ~ +100	°C	
Soldering Temperature	T _{SOL}	260	°C	

‡Soldering condition: Soldering condition must be completed within 3 seconds at 260°C

◆ Electro-Optical Characteristics

Item	Symbol	Condition	Minimum	Typical	Maximum	Unit
Forward Voltage	V _F	I _F =20mA		2.2	2.6	V
Reverse Current	I _R	V _R =5V			10	μA
Total Radiated Power	P _O	I _F =20mA		8.0		mW
Brightness	I _v	I _F =20mA	5,000	10,000		mcd
Peak Wavelength	λ _P	I _F =20mA	625	635	645	nm
Half Width	Δλ	I _F =20mA		15		nm
Viewing Half Angle	θ _{1/2}	I _F =20mA		±8		deg.

‡Brightness is measured by Tektronix J-16.

‡Total Radiated Power is measured by Photodyne #500